



The Lake Hotel

• KILLARNEY •



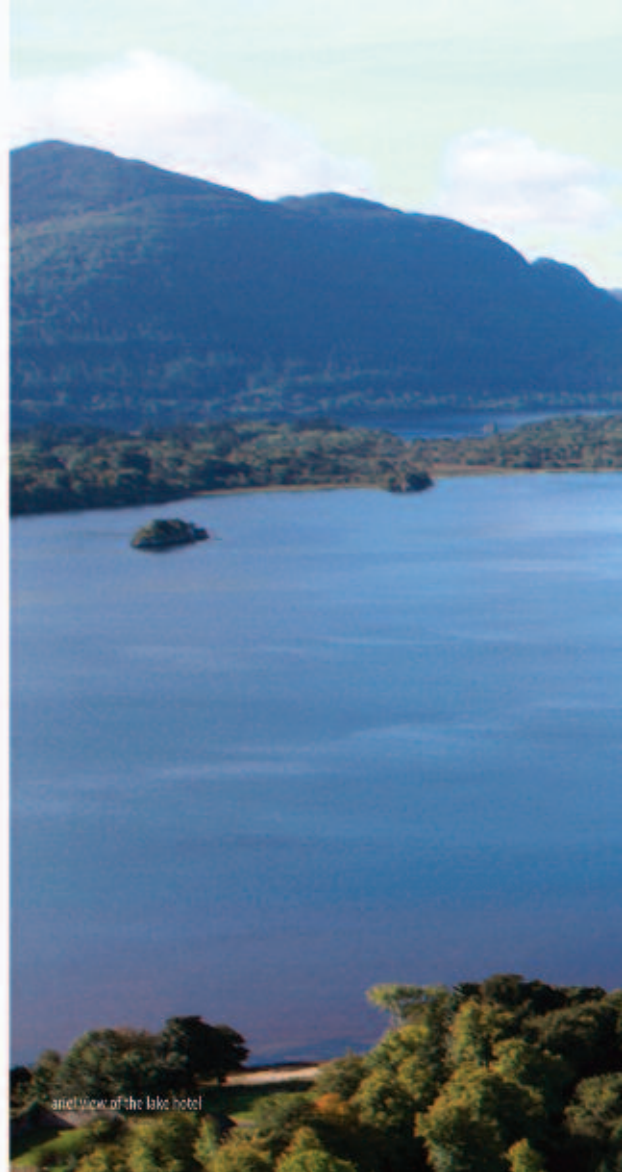
established 1820

Welcome

Nestling on the lakeshore of Lough Lein, Killarney's lower lake, The Lake Hotel, Killarney enjoys the most magnificent setting with the truly unique backdrop of the mountains, islands, woodlands and the 12th century McCarthy Mor castle ruins. The Lake Hotel is a four star, family run and owned hotel and has been welcoming guests since 1820, so a long tradition of warm Irish hospitality awaits all visitors.

Awaken with breakfast in the elegant dining room, The Castletlough Restaurant. Observe the wild deer stroll across the lawn, unwind over morning coffee in the Sun Lounge and absorb the peace and tranquillity imposed by the presence of the lakes. Wander down the pathways to the ancient castle ruins and be surrounded by the freshest of air and a landscape that is untouched but admired by visitors over the centuries. As the light fades and colours change, enjoy an aperitif in the Devil's Punch Bowl Bar before tasting the finest of Irish food and reflect on the abundance of natural beauty in this part of the world.

the difference...*family run*



another view of the lake hotel



History

The Lake Hotel was built in 1820 and in 1861 hosted Queen Victoria of England during her stay in Ireland. In recent times the hotel was owned by the families, Cotter to Coffey then Morrough, Bernard and Courtney. In 1897 it was purchased by Mr. Hillard of Killarney and in 1940 it was purchased by Martin and Mary Huggard of Waterville, who were also presented with Ashford Castle in Cong, Co Mayo by the Irish Government. Their role was to restore the Castle to a top quality hotel which was done under the guidance of Hilda's brother Noel. Hilda had learned the hotel trade from the best, her mother Mary, who was also a Director with Bord Failte (Irish Tourist Board). Known the four corners of the Earth for her hospitality, service and friendly welcome, Hilda passed on the Huggard traditions and renowned hospitality to her nephews, Tony, Colman, Niall and Joe who are actively involved in the Hotel to the present day and to many nephews, nieces, grand nephews and grand nieces who are also carrying on the Huggard tradition in tourism in Ireland today.





Reception

Staying at The Lake Hotel is like experiencing history. Since 1820 guests have been coming to stay in the hotel to enjoy its unique vista and although additions have been made over the years, a guest relaxing in the piano lounge today could be sitting in the very same spot as Queen Victoria when she visited in 1861.

At The Lake Hotel we pride ourselves on offering a truly Irish welcome, a tradition that has been fine-tuned over many years by the hotel owners, the Huggard family. A family owned and family run hotel, ensuring that all of our guests are comfortable and happy is our business. There is something for everyone staying with us at The Lake Hotel with Killarney town just 2 km away, the Killarney National Park adjacent to the property, several championship golf courses within a 5 mile radius and wild deer and eagles residing on our grounds. Equally this is the ideal setting for an essential escape from daily life with nothing to distract you except the panorama outside the hotel windows.



Lounges

Peaceful & relaxing lounges for our residents...

The Lough Lein Room

The Lough Lein Room is a lovely yellow toned room with lots of space and is the perfect retreat for our guests as they study the crossword. The joy of this room is that it lends itself to many purposes. Perfect for pre dinner drinks receptions celebrating family occasions such as wedding anniversaries or reunions or as a private meeting space, the Lough Lein Room can be arranged to suit your preference.



the lough lein room - the lake hotel



The Piano Lounge

The Piano Lounge is part of the original hotel building dating back to 1820 and with its soaring ceilings, intricate stucco work, antique chandeliers and grand piano, it evokes a sense of the grandeur of times past. This is the room where the Grand Balls would take place and where, these days, it offers the perfect space to sit back and relax, ponder on your plans for the day, read the morning paper, meet up with friends in the afternoon or enjoy an aperitif or digestif in the evening. Mementos illustrating the history of the hotel such as the monogrammed crystal collection, the original Singer sewing machine, letters and notes from past guests from the 1800's and 1900's are on display in this warm and welcoming lounge.

The Library

On the first floor of the hotel tucked away beside the main staircase is the Library. A room reserved for our guests, the Library offers not only a range of books, magazines, newspapers and board games but also three computers for complimentary use by our guests. An ideal space for planning out your day trips, the rest of your holiday in the region or for checking emails, the Library is a warm yet useful space. Wifi available.



Dining

The setting at The Lake Hotel is the perfect backdrop when enjoying good food, drink and company. Guests and non residents can enjoy classic afternoon tea in the Piano Lounge, a light or more substantial lunch in the Sun Lounge, a relaxing drink in the Devils Punch Bowl Bar and dinner in the grandeur of the original hotel dining room, The Castletough Restaurant. These rooms have been hosting convivial gatherings of friends and families for hundreds of years and a sense of this history and the style of these events is still evident to our guests. Relaxing back in an armchair by the wood burning fire in the lounge, surrounded by original memorabilia, having a cup of Earl Grey tea while the piano plays softly in the background, offers a real taste of times gone by. Friendly and attentive staff offering excellent locally sourced produce prepared with care by our Chefs, ensures a most enjoyable dining experience.

Residents and non residents are invited to enjoy The Lake Hotel Classic Afternoon Tea which is served in the Piano Lounge, Lough Lein Room, Sun Lounge, Residents Lounge or Devils Punch Bowl Bar.



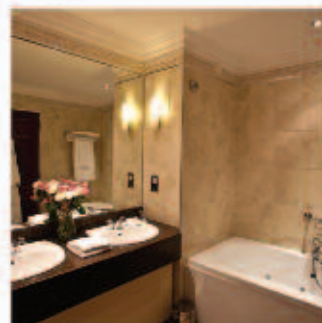


Rooms

At The Lake Hotel, there is a variety of accommodation from which to choose, many guests opt for the lake view rooms given the magnificence of the landscape which is laid out in front of them whilst others prefer the more low key beauty of the woodland areas to the front of the hotel, where the deer roam free. With either choice, the comfort of your surroundings combined with the loveliness of the scenery ensures a relaxing break away from daily life.

When booking your accommodation at The Lake Hotel, we offer a range of extra amenities for you to consider to enhance your stay with us. Please just enquire with our Reservations team.

If you are travelling with small children, we are happy to provide cots on a complimentary basis and many of our rooms have two queen beds therefore allowing the family to stay together. Please advise us of your requirements when making your reservation.



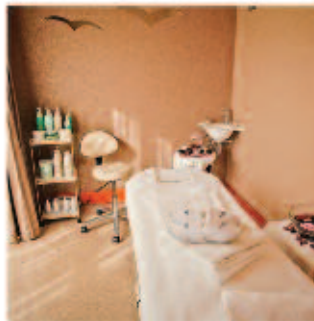
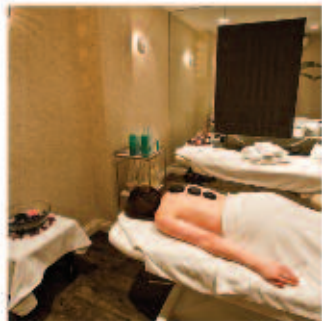


4 poster deluxe room - the lisa hotel

Beauty

At The Lake Hotel despite having unparalleled jogging and exercise space just beyond our doors and the 25,000 acre National Park adjacent to our property, we offer a fully equipped fitness centre and gym. Located on the ground floor and looking out across the lawn, past the hot tub to the lakes and mountains, we hope this view will take your mind off the miles to be run on the treadmill or rowed on the rowing machine.





The Lake Beauty Treatment Rooms

The treatment rooms at The Lake Hotel provide yet another opportunity to relax and unwind whilst staying with us. These rooms are located beside the Muckross Fitness Centre on the ground floor of the hotel and therefore they enjoy the peace and tranquillity of being on the lake shore. A range of relaxing, revitalising and therapeutic face and body treatments are available from our experienced and friendly therapists. A full list of all treatments is available on the hotel website or by calling the hotel. We recommend booking treatments as far in advance as possible. To check availability for a treatment please contact us by email or phone and we will be happy to help you. Use of the Muckross Fitness Centre and hot tub is complimentary to our guests. Towels are available at the Muckross Fitness Centre for use in the gym and hot tub. Changing rooms and showers are also located within the Centre.



Events

The Lake Hotel is the ideal location for any event, whether it be an annual company conference where team building and creative thinking are part of the programme or a wedding anniversary when family come together to celebrate a wonderful occasion. From small one day meetings or interview sessions to small or medium sized weddings, at The Lake Hotel we delight in welcoming our guests and ensuring that everyone experiences the same warm Irish welcome and friendly service and takes away fond memories of their stay with us. We have four different sized function rooms at The Lake Hotel ranging from The Osprey Room to The Castle Suite. Each room has the capacity to be arranged in different styles for different requirements.

Weddings at The Lake Hotel enjoy the most stunning setting in all of Killarney with the opportunity to take numerous photos on the lake shore and with the stunning backdrop of the lakes, mountains and National Park. There is a variety of wedding options at the hotel depending on the numbers attending and the bridal couple's preferences. We are happy to prepare quotations or check availability for any event enquiry. Please contact us by telephone or email and we will be happy to help you.





Golf

To play golf on any of the links or parkland courses in Kerry is to become a part of something spectacular, from the rugged stormy beauty of Waterville to the lush greenery of Killeen, Killarney. Other world class championship courses include Ballybunion and Old Head Kinsale to more relaxed courses like The Ross and Dingle. There is a course for everyone and every level, on the Atlantic Ocean or on the Lakes of Killarney and all offer great golf in a beautiful corner of Ireland.

We are happy to provide information for golfing groups and guests. Packed lunches can be organised for small or large groups with advance notice. Information on courses and equipment hire is available from hotel Reception. Preferential group rates are available to golfing groups staying at The Lake Hotel.



killeen course - killarney golf & fishing club



Activities

It is difficult to describe the sheer scale of the areas surrounding The Lake Hotel and Killarney which provide world class walking and cycling trails in such truly breathtaking surroundings. Not only is there an immeasurable amount of routes to take when leaving the hotel gates each morning but the backdrop to your walk or cycle is magical and will remain a treasured memory of your time spent in Killarney and Kerry. The Killarney National Park is immediately adjacent to the grounds of The Lake Hotel and extends over 25,000 acres, suffice to say there are endless trips and strolls to take within this immense area.

Beyond the Park is the surrounding area of Killarney, also Tralee, Waterville and Kenmare to name but a few and the natural beauty in such abundance in all of these regions ensures that walkers and cyclists do not leave us disappointed.

We are happy to provide local maps and routes for cycling and walking groups and guests. Packed and picnic lunches can be organised for small or large groups with advance notice. Information on bicycle and walking equipment hire is available from Reception. Preferential group rates are available to walking and cycling groups staying at The Lake Hotel.



Killarney

Visitors have been travelling to Killarney for over 200 years to see its legendary beauty and it is easy to see why they came then and why they continue to come now. Here at The Lake Hotel we are unbelievably fortunate to be located in a place of such natural beauty and splendour. As you stroll out of the lounge doors of the hotel, the Lakes of Killarney and the Killarney National Park are on display in front of you. The town of Killarney is set on the Ring of Kerry which is a world famous touring route celebrated for its scenery. The day trip of the Gap of Dunloe can start and finish at the hotel's private pier and takes in a boat trip on the lakes in addition to the pony and trap journey through the Gap itself. Sleah Head and Dingle are only an hour's drive to the north west of Killarney and the drive to Dingle is in itself a reason to take this trip. The charming town of Dingle and the rugged majestic landscape of Sleah Head would take your breath away, a world apart from the lush, verdant beauty of Killarney and the lakes.



Lakes of Killarney



▲
The Lake Hotel

Killarney

The Killarney National Park extends over 25,000 acres and encompasses the famous Lakes of Killarney and the MacGuillicuddy Reeks, Ireland's highest mountain range. There are so many features to this enormous and impressive park that it is impossible to name them all. Some of the more popular or better known areas include Torc Waterfall, an impressive waterfall easily accessed from the road and by walking up alongside it. Featured in so many historical postcards of Killarney and once a hunting lodge, Dinis Cottage situated by The Old Weir Bridge has operated as a tea rooms for more than 200 years and offers both inside and outdoor seating. It is a tempting stop-off for many visitors walking the popular Muckross and Dinis route through the National Park.



upper lake : killarney



Kerry

The Kingdom of Kerry, there is a reason why this has become the catchphrase for this magnificent corner of the world, in fact many reasons. Located on the most south westerly part of Ireland, Kerry faces out to the vast Atlantic Ocean, has the highest mountain range in Ireland, is home to the world famous Ring of Kerry touring route and much more. Visitors to Kerry will be amazed by the range of activities, golf, day trips and historical sites to be experienced during their stay along with lots of great cafe's, pubs and restaurants for refreshments along the way.

Here at the hotel, we are delighted to assist with planning or booking day trips, to offer maps, packed lunches or recommendations for stops along any trip or journey, to highlight areas of importance or particular beauty and to generally ensure that any guest to The Lake Hotel and Kerry fully enjoys their break away.



Contact



mailing address: Lake Shore : Muckross Road : Killarney : County Kerry : Ireland
telephone: +353 (0) 64 6631035 : email: info@lakehotel.com : website: www.lakehotel.com



view from the hotel





www.lakehotel.com



Lake Shore : Muckcross Road : Killarney : Co. Kerry : Ireland : telephone +353 (0) 64 6631035 : info@lakehotel.com